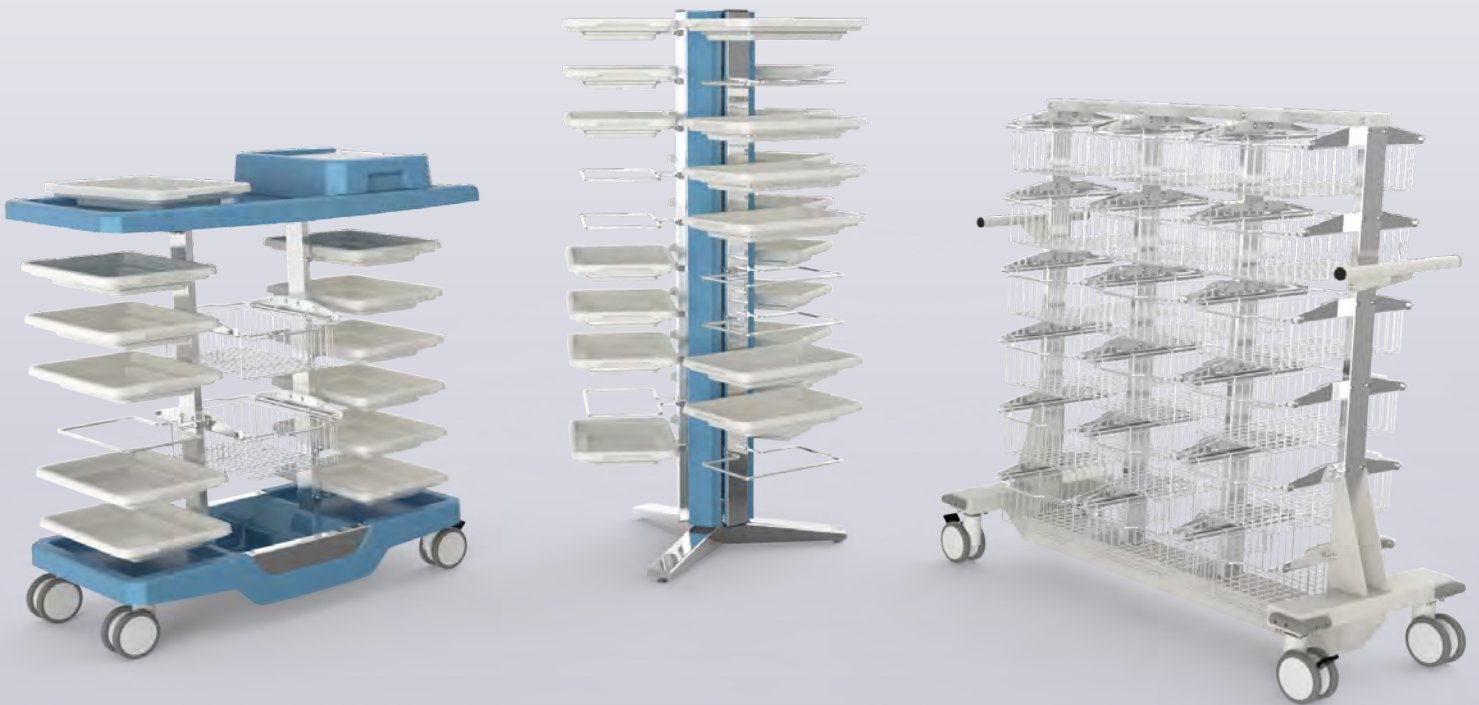


# Adaptaid<sup>+</sup>

## Supply Distribution

SOLUTIONS

A variety of solutions to ensure efficient distribution of medical supplies.



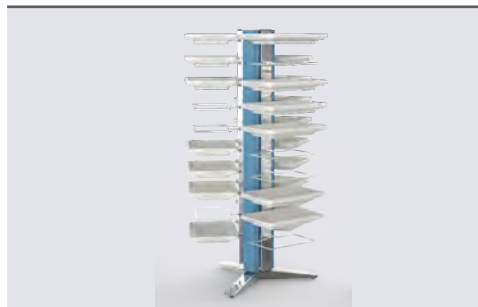
## MEDICART

Page 3



## EASYFEED Rotating Storage Tower

Page 5



## EASYFEED Supply Cart

Page 5



## Transport Cart with Sliding Baskets

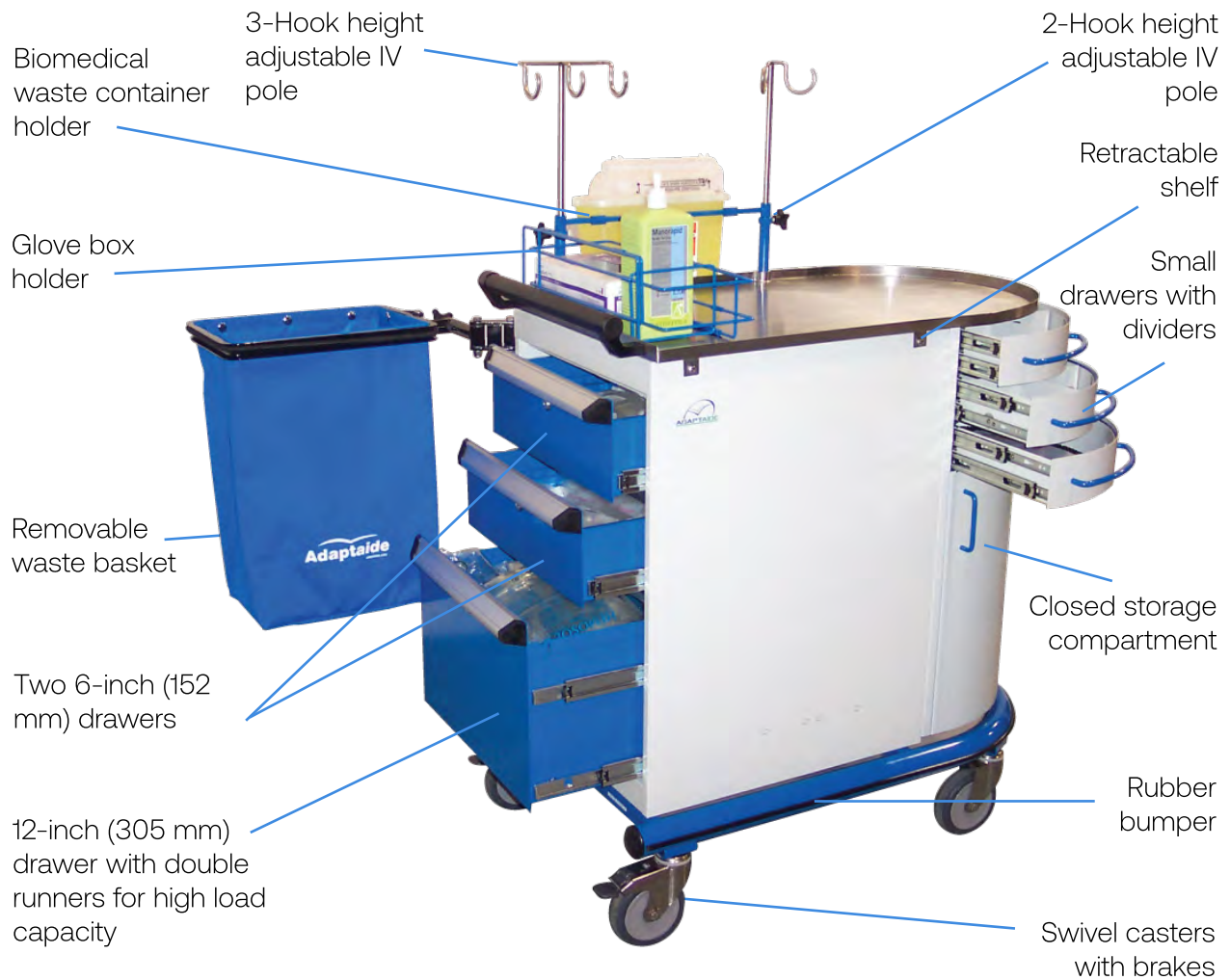
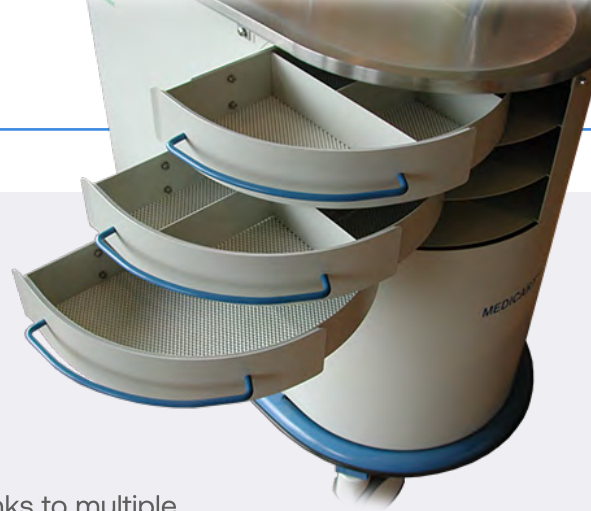
Page 7



## MEDICART

Whether for the emergency department, the operating theatre, intensive care or simply for visiting patients, the Medicart has been developed for multifunctional use.

This cart makes it easy to transport a wide range of supplies, thanks to multiple compartments of varying sizes. What's more, a number of practical accessories can be added for customized use.



## MEDICART Features

### Quality Standard Components

---

<b>Structure</b>	Baked-on, electrostatically coated steel cladding. Stainless steel top surface. Closed storage compartment. Bumper with rubber strip.
<b>Drawers</b>	Two 6 inch (152 mm) drawers and one 12 inch (305 mm) drawer. 100% opening of each drawer. Ball-bearing slides. Small drawers with removable dividers, designed to hold light supplies and medication. Optional lock.
<b>Load Capacity</b>	Recommended maximum of 100 Lb (45.36 kg).
<b>Casters</b>	Four Ø5 inch (125 mm) swivel casters, two with directional locking and total brake.
<b>Dimensions</b>	L x Px H: 21 1/4 x 37 1/4 x 37 13/16 inches, 540 x 940 x 960 mm

---

### Additional Options for Customized Carts

---

<b>Holders</b>	Choice of: IV, glove box, biomedical waste container, binder/book, defibrillator/vital signs unit, oxygen cylinder
<b>Bins</b>	Small and large sizes available
<b>Shelf</b>	Retractable
<b>Waste Bin</b>	Retractable
<b>Board</b>	For cutting
<b>Casters</b>	Four Ø5 inch (125 mm) swivel wheels with rear brakes

---

\* The availability of certain additional options may vary according to the cart selected.



## EASYFEED

### Rotating Storage Tower and Supply Cart

The EASYFEED duo can be easily configured for efficient transport and management of consumables.

The cart and revolving tower of this range share many advantages, such as their robust steel structure and sturdy polypropylene trays. These are removable and compatible with both tower and cart.

### Pivoting Distribution for Supply from All Sides

The rotating storage tower is the ideal solution for storing large quantities of consumables and supplies in a confined space. The revolving movement facilitates access to the 30 removable trays, which can be transferred to the cart or transported directly to the point of care.



### Versatile Supply Cart

This supply cart is specifically designed for the distribution of consumables used in dialysis. It is compatible with Baxter Artis dialysis equipment..

## EASYFEED Cart Features

### Quality Standard Components

---

**Structure** Zinc-plated steel frame, chrome-plated steel masts. ABS/PC cladding. Eight chrome-plated steel tray holders. Load capacity 220 Lb (100 kg).

---

**Baskets** Two double-sided sliding wire baskets in chrome-plated steel with loading capacity up to 33 Lb (15 kg).

Basket dimensions W x D x H: 10 x 18 x 4.5 inches, 254 x 457 x 114 mm

---

**Trays** Polypropylene with load capacity per tray 11 Lb (5 kg). Eight trays included for the cart and 30 for the rotating storage tower.

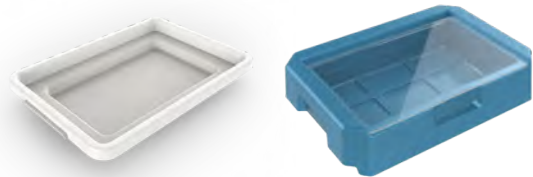
---

**Casters** Four Ø5 inch (125 mm) swivel casters in heat-resistant, non-marking polyurethane. Directional locking and total brake on two casters. Maintenance-free ball bearings.

---

**Dimensions** Cart W x D x H: 45 3/8 x 22 3/16 x 44 9/16 inches, 1153 x 563 x 1132 mm  
Rotary tower W x D x H: 34 x 31 1/2 x 64 inches, 860 x 800 x 1620 mm

---



### Additional Accessories

---

Wire baskets

---

Removable basket in ABS/PC with transparent lid

---

Supply tray

---

Tray holder

---

\* The availability of certain additional options may vary according to the cart selected.



## Supply Cart with Sliding Baskets

This cart facilitates the distribution of medical supplies thanks to baskets that slide out from both sides.

It is designed for the safe movement of heavy consumables, such as IV bags. Its storage system secures baskets in place to move supplies with complete peace of mind.



### A Cart with Many Advantages

- + Sturdy, lightweight, easy-to-clean frame.
- + Transport baskets accessible from both sides.
- + Non-marking bumpers at each corner.
- + Extended base for greater stability.
- + Maintenance-free ball-bearing casters.
- + Brakes for safe stationary operation.
- + Retaining stops on each basket to prevent movement during transport.

### Quality Standard Components

<b>Structure</b>	Painted steel frame and handles. Chrome-plated steel masts and runners. Non-marking bumpers at all four corners.
<b>Baskets</b>	18 baskets with double-sided runners in chrome-plated steel, dimensions W x D x H: 10 x 18 x 4.5 inches, 254 x 457 x 114 mm
<b>Load Capacity</b>	Recommended maximum 325 Lb (147 kg) or 25 Lb (11 kg) per basket.
<b>Casters</b>	Four Ø5 inch (125 mm) swivel casters, two of which have directional locking and total brakes.
<b>Dimensions</b>	L x P x H: 55 3/4 x 23 7/8 x 53 3/4 inches, 1416 x 587 x 1365 mm

# Adaptaid<sup>+</sup>

*High Performance Medical Equipment  
Designed for Healthcare Professionals*

THIS DOCUMENT IS THE PROPERTY OF ADAPTAIDE INC. ANY REPRODUCTION,  
USE OR COPY FOR THE PURPOSE OF MANUFACTURING OR SELLING ANY  
PRODUCT IS STRICTLY PROHIBITED WITHOUT WRITTEN CONSENT.

2024 ADAPTAIDE INC. ALL RIGHTS RESERVED

