

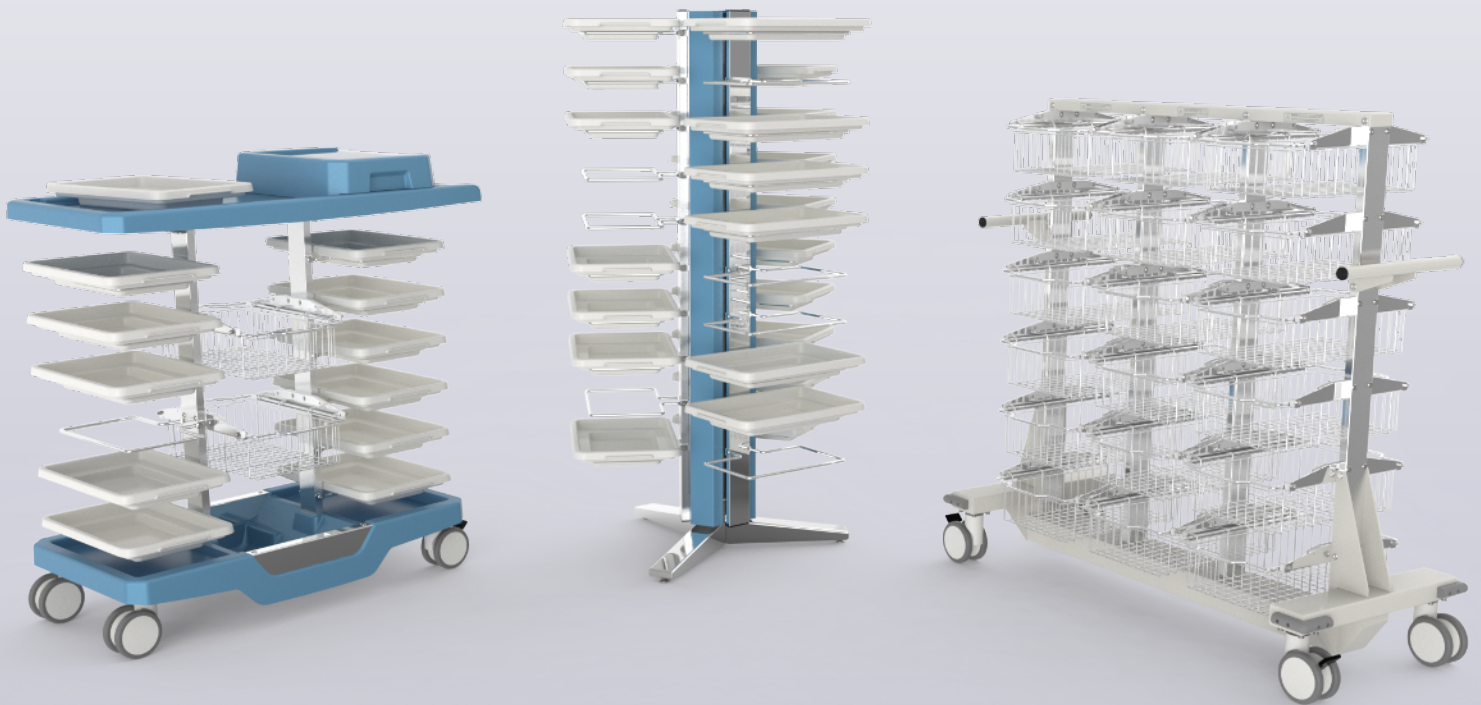
Adaptaid⁺

Supply Distribution

SOLUTIONS



A variety of solutions to ensure efficient distribution of medical supplies.



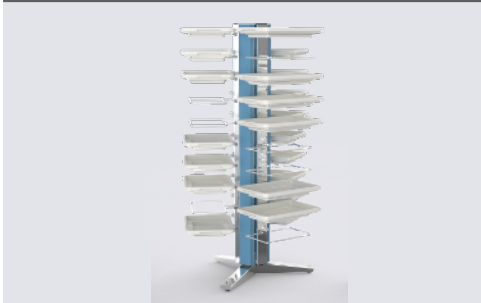
MEDICART

Page 3



EASYFEED Rotating Storage Tower

Page 5



EASYFEED Supply Cart

Page 5



Transport Cart with Sliding Baskets

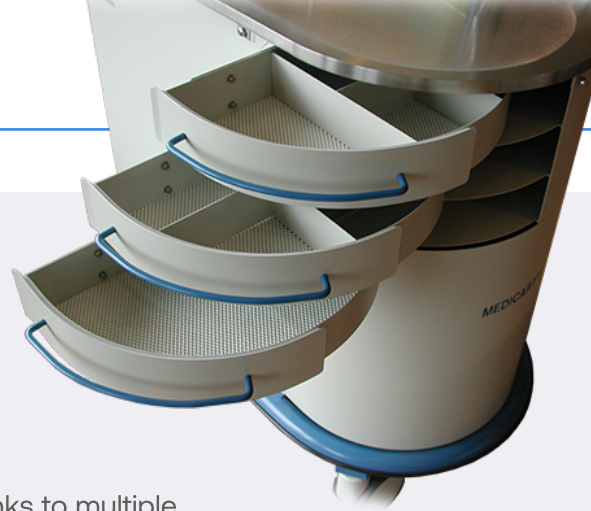
Page 7



MEDICART

Whether for the emergency department, the operating theatre, intensive care or simply for visiting patients, the Medicart has been developed for multifunctional use.

This cart makes it easy to transport a wide range of supplies, thanks to multiple compartments of varying sizes. What's more, a number of practical accessories can be added for customized use.



MEDICART Features

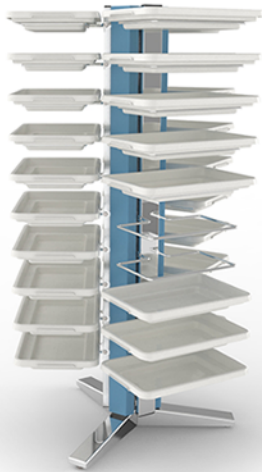
Quality Standard Components

Structure	Baked-on, electrostatically coated steel cladding. Stainless steel top surface. Closed storage compartment. Bumper with rubber strip.
Drawers	Two 6 inch (152 mm) drawers and one 12 inch (305 mm) drawer. 100% opening of each drawer. Ball-bearing slides. Small drawers with removable dividers, designed to hold light supplies and medication. Optional lock.
Load Capacity	Recommended maximum of 100 Lb (45.36 kg).
Casters	Four Ø5 inch (125 mm) swivel casters, two with directional locking and total brake.
Dimensions	L x Px H: 21 1/4 x 37 1/4 x 37 13/16 inches, 540 x 940 x 960 mm

Additional Options for Customized Carts

Holders	Choice of: IV, glove box, biomedical waste container, binder/book, defibrillator/vital signs unit, oxygen cylinder
Bins	Small and large sizes available
Shelf	Retractable
Waste Bin	Retractable
Board	For cutting
Casters	Four Ø5 inch (125 mm) swivel wheels with rear brakes

* The availability of certain additional options may vary according to the cart selected.



EASYFEED

Rotating Storage Tower and Supply Cart

The EASYFEED duo can be easily configured for efficient transport and management of consumables.

The cart and revolving tower of this range share many advantages, such as their robust steel structure and sturdy polypropylene trays. These are removable and compatible with both tower and cart.

Pivoting Distribution for Supply from All Sides

The rotating storage tower is the ideal solution for storing large quantities of consumables and supplies in a confined space. The revolving movement facilitates access to the 30 removable trays, which can be transferred to the cart or transported directly to the point of care.



Versatile Supply Cart

This supply cart is specifically designed for the distribution of consumables used in dialysis. It is compatible with Baxter Artis dialysis equipment..

EASYFEED Cart Features

Quality Standard Components

Structure Zinc-plated steel frame, chrome-plated steel masts. ABS/PC cladding. Eight chrome-plated steel tray holders. Load capacity 220 Lb (100 kg).

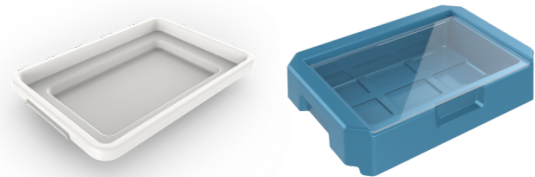
Baskets Two double-sided sliding wire baskets in chrome-plated steel with loading capacity up to 33 Lb (15 kg).

Basket dimensions W x D x H: 10 x 18 x 4.5 inches, 254 x 457 x 114 mm

Trays Polypropylene with load capacity per tray 11 Lb (5 kg). Eight trays included for the cart and 30 for the rotating storage tower.

Casters Four Ø5 inch (125 mm) swivel casters in heat-resistant, non-marking polyurethane. Directional locking and total brake on two casters. Maintenance-free ball bearings.

Dimensions Cart W x D x H: 45 3/8 x 22 3/16 x 44 9/16 inches, 1153 x 563 x 1132 mm
Rotary tower W x D x H: 34 x 31 1/2 x 64 inches, 860 x 800 x 1620 mm



Additional Accessories

Wire baskets

Removable basket in ABS/PC with transparent lid

Supply tray

Tray holder

* The availability of certain additional options may vary according to the cart selected.



Supply Cart with Sliding Baskets

This cart facilitates the distribution of medical supplies thanks to baskets that slide out from both sides.

It is designed for the safe movement of heavy consumables, such as IV bags. Its storage system secures baskets in place to move supplies with complete peace of mind.

A Cart with Many Advantages

- + Sturdy, lightweight, easy-to-clean frame.
- + Transport baskets accessible from both sides.
- + Non-marking bumpers at each corner.
- + Extended base for greater stability.
- + Maintenance-free ball-bearing casters.
- + Brakes for safe stationary operation.
- + Retaining stops on each basket to prevent movement during transport.



Quality Standard Components

Structure	Painted steel frame and handles. Chrome-plated steel masts and runners. Non-marking bumpers at all four corners.
Baskets	18 baskets with double-sided runners in chrome-plated steel, dimensions W x D x H: 10 x 18 x 4.5 inches, 254 x 457 x 114 mm
Load Capacity	Recommended maximum 325 Lb (147 kg) or 25 Lb (11 kg) per basket.
Casters	Four Ø5 inch (125 mm) swivel casters, two of which have directional locking and total brakes.
Dimensions	L x P x H: 55 3/4 x 23 7/8 x 53 3/4 inches, 1416 x 587 x 1365 mm

Adaptaid⁺

*High Performance Medical Equipment
Designed for Healthcare Professionals*

THIS DOCUMENT IS THE PROPERTY OF ADAPTAIDE INC. ANY REPRODUCTION,
USE OR COPY FOR THE PURPOSE OF MANUFACTURING OR SELLING ANY
PRODUCT IS STRICTLY PROHIBITED WITHOUT WRITTEN CONSENT.

2025 ADAPTAIDE INC. ALL RIGHTS RESERVED

